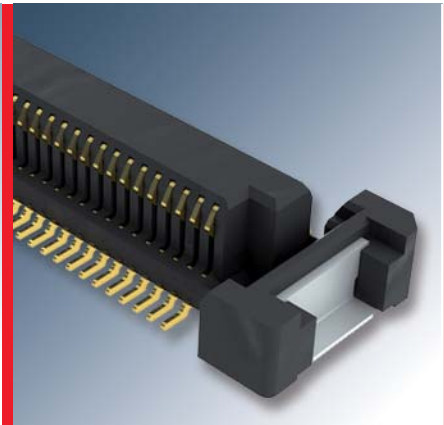
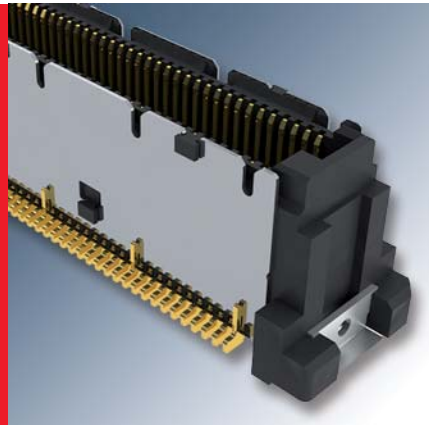
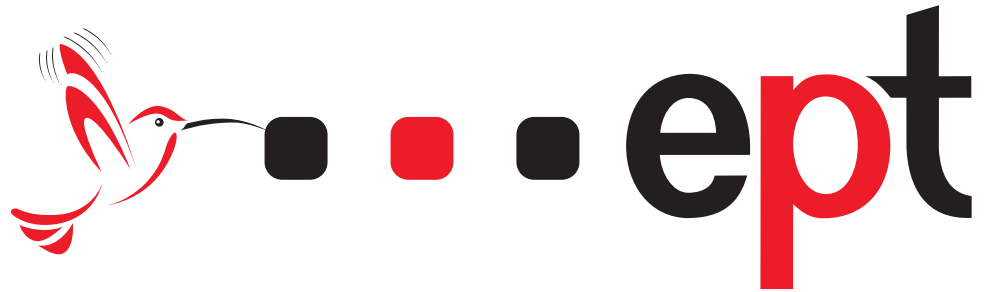


www.ept.de

Coming soon



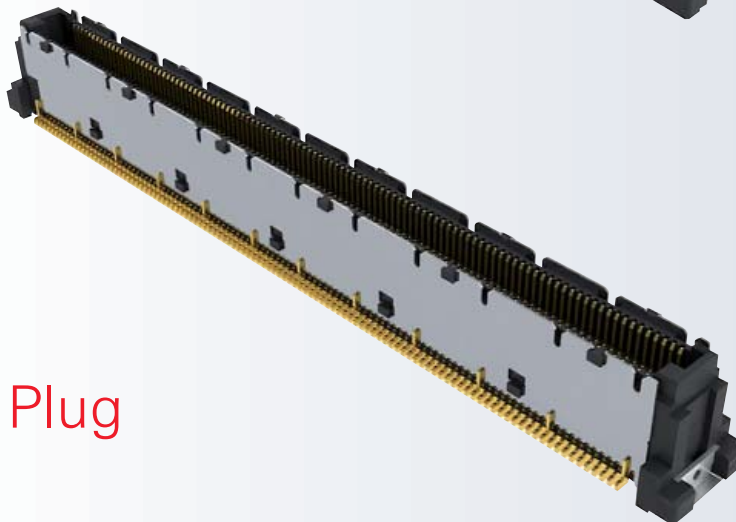
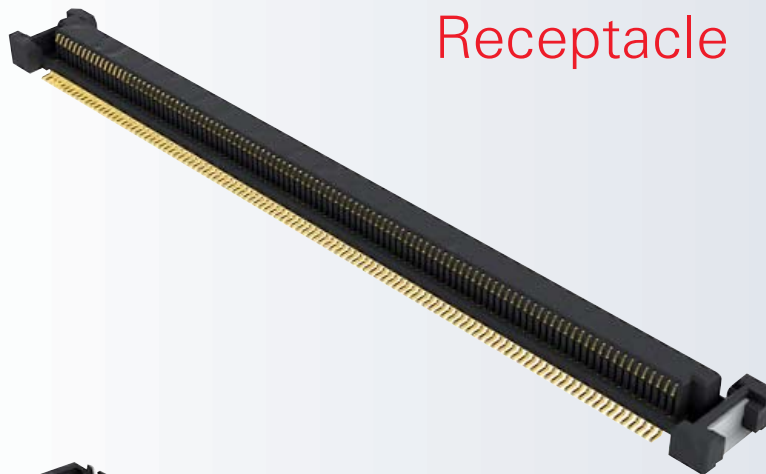
## 0.5 mm SMT Board-to-Board Connector System

Designed to meet requirements of

**COM**  **Express**<sup>®</sup> and CoreExpress<sup>®</sup>.

ept's **Colibri** connector is a shielded, 2-row, SMT interconnect system in 0.5 mm pitch.

Both connectors, Plug and Receptacle, will be available in the first quarter of 2011 with 8 mm stacking height and 220 pins. They are designed to meet requirements according to specifications not only of PICMG COM Express®, but also of SFF-SIG Core Express®. Additional versions with flexible pin count as well as multiple stack heights will be available consecutively.



## Key Features

- Designed to meet requirements of PICMG COM Express® and SFF-SIG CoreExpress®
- Intermatability with available connectors in the market
- Robust connector design
- Plug connector with ground shield
- Receptacle connector with ground pins
- Custom configurations in pin count
- Multiple stack heights

## Applications

- High density board designs
- COM Express®
- CoreExpress®
- Board-to-Board
- Mezzanine Add-on Cards

### Important Notice:

Specifications are subject to change without notice. All statements, information, and data given herein are believed to be accurate and reliable but are presented without guarantee, warranty, or responsibility of any kind expressed or implied. Statements or suggestions concerning possible use of our products are made without representation or warranty that any such use is free of patent infringement and are not recommendations to infringe any patent. The user should not assume that all safety measures are indicated or that other measures may not be required.

**ept GmbH**  
Peiting, Germany  
Tel. +49 (0) 88 61 / 25 01 0  
sales@ept.de

**ept, inc.**  
Chester, Virginia, USA  
Tel. +1 804 530 0820  
800 323 2568  
sales@eptusa.com

**ept Electronic Precision  
Technology (Shanghai) Ltd.**  
Shanghai, P. R. China  
Tel. +86 (0) 21-54 26-09 88  
sales@eptcn.com